

# Victor Lite Video Production Camera Cart (VCTR-LT)

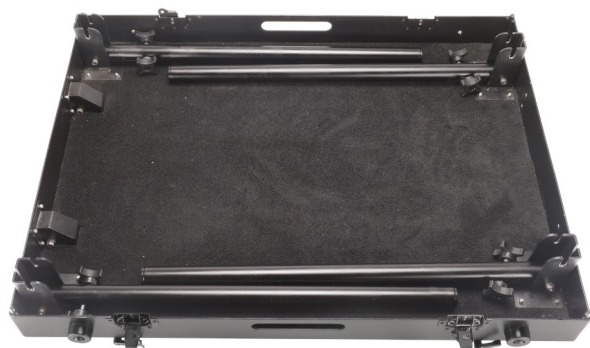
## Assembly Manual



Available Size: 32", 36", 42" & 48"

### What's In The Box

Please inspect the contents of your shipped package to ensure you have received everything that is listed below.



Bottom Shelf with (4 x 6" Foldable Rods)



Top Shelf



4 x Pneumatic Wheels



2 x Handles



1 x Accessory Crossbar



1 x Suitcase Handle



4 x Knobs

All rights reserved.

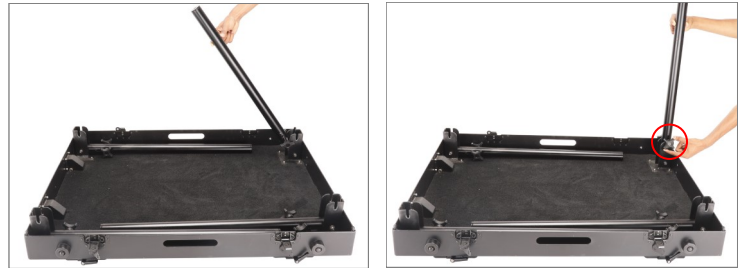
No part of this document may be reproduced, stored in a retrieval system, or transmitted by any form or by any means, electronic, mechanical, photo-copying, recording, or otherwise, except as may be expressly permitted by the applicable copyright statutes or in writing by the Publisher.

## Victor Cart Setup

- Open all 4 locks of the Trolley to take out all the parts, as shown in the image.



- Open the 4 x legs of the bottom shelf of the Trolley.



- Tighten the 4 x legs properly with the help of the provided knob on the bottom shelf of the Trolley.



- Slide pneumatic wheels onto the cart's bottom shelf and lock them with the top knob, as shown in the image.

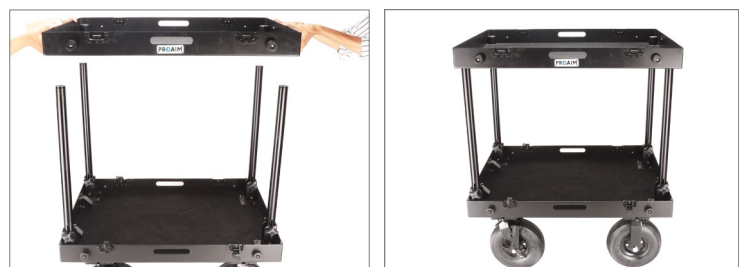


- Pneumatic wheels are correctly assembled, as shown in the image



- Mount Top Shelf of Trolley onto Rods, as shown in the image.

**NOTE:** Two people are required to set the top shelf on the rods.



- Insert the 4 x knobs into the 4 corners of the top shelf and tighten it.



- Finally, 4 x knobs are properly attached to the 4 corners on the cart's top shelf.



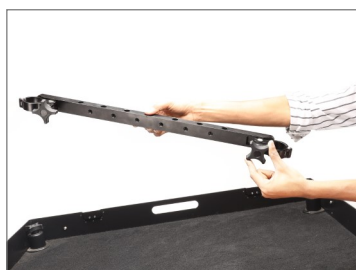
- Now for rubber handles, Lose the rubber handle & attach the rubber handles to the rods. Set the height as per your requirements.



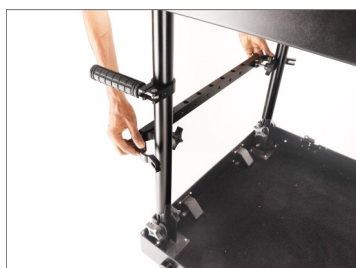
- Follow the same process for the other rubber handle, and both of your rubber handles are attached to the rods.



- For attaching Crossbar, loosen the side clamp knobs of the accessory crossbar.



- Then mount the Crossbar on the rods and tighten the knob properly.



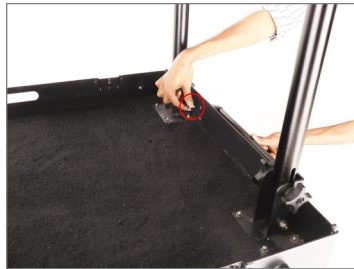
- Now, for attaching the Suitcase Handle, Remove the button heads of the handle with the help of the 4mm Allen key.



- Attach the Suitcase Handle to the bottom shelf.



- Align the handle with the bottom Shelf, put the bolt back, and tighten it using a 4mm Allen key.



- Proaim Victor Lite Video Production Camera Cart is ready to use.



**YOUR PROAIM VICTOR LITE VIDEO PRODUCTION CAMERA CART  
ALL DRESSED UP AND READY TO GO!**



**(SHOWN WITH OPTIONAL ACCESSORIES)**

**Warranty:** We offer one year warranty for our products from date of purchase. Within this period of time, we will repair it without charge for labor or parts. Warranty doesn't cover transportation costs nor does it cover a product subjected to misuse or accidental damage. Warranty repairs are subjected to inspection and evaluation by us.

**Liability:** We are not liable for damage caused by products that we do not supply or from mishandling in transit, accident, misuse, neglect, lack of care of the product, or service by anyone other than our company.

**Contact Us:** In case of any kind of dissatisfaction, please Contact us immediately and we promise our utmost support and care until you use our product.